

GPR33 Polyclonal Antibody

Description

Product type	Primary Antibody
Code	BT-AP09659
Host	Rabbit
Isotype	IgG
Size	20ul, 50ul, 100ul
Immunogen	Synthesized peptide derived from part region of human protein
Mol wt	N/A
Species reactivity	Human, Rat, Mouse
Clonality	Polyclonal
Recommended application	WB, ELISA
Concentration	1 mg/ml
Full name	Probable G-protein coupled receptor 33
Synonyms	Probable G-protein coupled receptor 33

This product is for research use only, not for use in human, therapeutic or diagnostic procedure.

Background

This gene has been identified as an orphan chemoattractant G-protein-coupled receptors (GPCR) pseudogene. Studies have shown that the inactivated gene is present as the predominant allele in the human population. A small fraction of the human population has been found to harbor an intact allele.

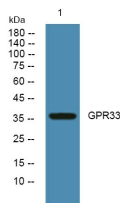
Recommended Dilution

WB: 1: 500 - 1: 2000

ELISA: 1: 5000 - 1: 20000

Not yet tested in other applications.

Images



Western blot analysis of lysates from SW480 cells, primary antibody was diluted at 1:1000, 4°C overnight

Storage

-20°C for 1 year