

ZC3H11A Polyclonal Antibody

Description

Product type	Primary Antibody
Code	BT-AP09660
Host	Rabbit
Isotype	IgG
Size	20ul, 50ul, 100ul
Immunogen	The antiserum was produced against synthesized peptide derived from human ZC3H11A. AA range:291-340
Mol wt	89131
Species reactivity	Human, Monkey
Clonality	Polyclonal
Recommended application	WB, ELISA
Concentration	1 mg/ml
Full name	ZC3H11A Antibody
Synonyms	ZC3H11A; KIAA0663; ZC3HDC11A; Zinc finger CCCH domain-containing protein 11A

This product is for research use only, not for use in human, therapeutic or diagnostic procedure.

Background

ZC3H11A is a C3H1-type zinc finger protein. ZC3H11A has been identified as a protein that is phosphorylated upon DNA damage by ATM or ATR. The function of ZC3H11A remains uncharacterized.

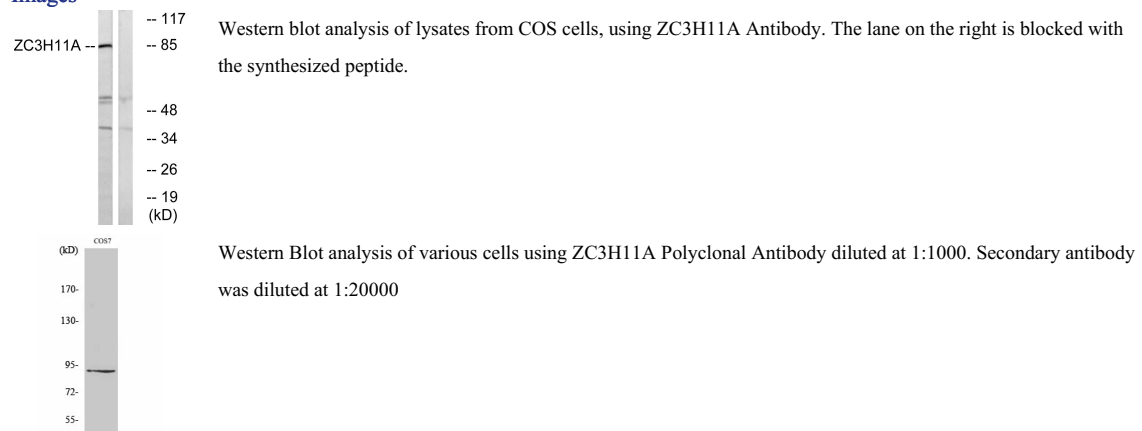
Recommended Dilution

WB: 1: 500 - 1: 2000

ELISA: 1: 20000

Not yet tested in other applications.

Images



Storage

-20°C for one year

