

ZC3H13 Polyclonal Antibody

Description

Product type	Primary Antibody
Code	BT-AP09661
Host	Rabbit
Isotype	IgG
Size	20ul, 50ul, 100ul
Immunogen	The antiserum was produced against synthesized peptide derived from human ZC3H13. AA range:1571-1620
Mol wt	196635
Species reactivity	Human, Mouse
Clonality	Polyclonal
Recommended application	WB, ELISA
Concentration	1 mg/ml
Full name	ZC3H13 Antibody
Synonyms	ZC3H13; KIAA0853; Zinc finger CCCH domain-containing protein 13

This product is for research use only, not for use in human, therapeutic or diagnostic procedure.

Background

The zinc finger CCCH domain-containing protein 13 (ZC3H13) is a 1668 amino acid protein that contains one C3H1-type zinc finger. ZC3H13 is phosphorylated upon DNA damage, most likely by ATM or ATR. Two isoforms of ZC3H13 exists as a result of alternative splicing events. The gene encoding ZC3H13 maps to chromosome 13, which contains around 114 million base pairs and 400 genes. Key tumor suppressor genes on chromosome 13 include the breast cancer susceptibility gene, BRCA2, and the RB1 (retinoblastoma) gene. As with most chromosomes, polysomy of part or all of chromosome 13 is deleterious to development and decreases the odds of survival. Trisomy 13, also known as Patau syndrome, is quite deadly and the few who survive past one year suffer from permanent neurologic defects, difficulty eating and vulnerability to serious respiratory infections.

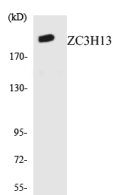
Recommended Dilution

WB: 1: 500 - 1: 2000

ELISA: 1: 10000

Not yet tested in other applications.

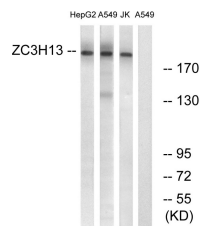
Images



Western blot analysis of the lysates from HUVEC cells using ZC3H13 antibody.



Western Blot analysis of various cells using ZC3H13 Polyclonal Antibody. Secondary antibody was diluted at 1:20000



Western blot analysis of lysates from A549, Jurkat, HepG2 cells, using ZC3H13 Antibody. The lane on the right is blocked with the synthesized peptide.

Storage

-20°C for one year

501 Changsheng S Rd, Nanhu Dist, Jiaxing, Zhejiang, China

Tel: 86 21 31007137 | E-mail: save@bt-laboratory.com | www.bt-laboratory.com