

## ZDHHC20 Polyclonal Antibody

### Description

<b>Product type</b>	Primary Antibody
<b>Code</b>	BT-AP09669
<b>Host</b>	Rabbit
<b>Isotype</b>	IgG
<b>Size</b>	20ul, 50ul, 100ul
<b>Immunogen</b>	The antiserum was produced against synthesized peptide derived from human ZDHHC20. AA range:72-121
<b>Mol wt</b>	42278
<b>Species reactivity</b>	Human, Mouse, Rat
<b>Clonality</b>	Polyclonal
<b>Recommended application</b>	WB, ELISA
<b>Concentration</b>	1 mg/ml
<b>Full name</b>	ZDHHC20 Antibody
<b>Synonyms</b>	ZDHHC20; Probable palmitoyltransferase ZDHHC20; Zinc finger DHHC domain-containing protein 20; DHHC-20

This product is for research use only, not for use in human, therapeutic or diagnostic procedure.

### Background

ZDHHC20 (Zinc Finger DHHC-Type Containing 20) is a Protein Coding gene. GO annotations related to this gene include protein-cysteine S-palmitoyltransferase activity and palmitoyltransferase activity. An important paralog of this gene is ZDHHC15.

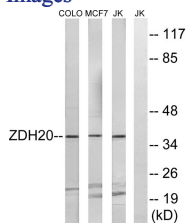
### Recommended Dilution

WB: 1: 500 - 1: 2000

ELISA: 1: 10000

Not yet tested in other applications.

### Images



### Storage

-20°C for one year