

## EPPI Rabbit Polyclonal Antibody

### Description

|                         |   |
|-------------------------|---|
| Product type            | Primary Antibody                            |
| Code                    | BT-AP09672                                  |
| Host                    | Rabbit                                      |
| Isotype                 | IgG   |
| Size                    | 20ul, 50ul, 100ul                           |
| Immunogen               | Synthesized peptide derived from human EPPI |
| Mol wt                  | 14630                                       |
| Species reactivity      | Human, Mouse, Rat                           |
| Clonality               | Polyclonal                                  |
| Recommended application | WB  |
| Concentration           | 1 mg/ml                                     |
| Full name               | EPPI  |
| Synonyms                | EPPI  |

This product is for research use only, not for use in human, therapeutic or diagnostic procedure.

### Background

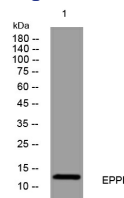
This gene encodes an epididymal protease inhibitor which contains both kunitz-type and WAP-type four-disulfide core (WFDC) protease inhibitor consensus sequences. Most WFDC genes are localized to chromosome 20q12-q13 in two clusters: centromeric and telomeric. This gene is a member of the WFDC gene family and belongs to the telomeric cluster. The protein can inhibit human sperm motility and exhibits antimicrobial activity against *E. coli* and polymorphisms in this gene are associated with male infertility. Read-through transcription also exists between this gene and the downstream WFDC6 (WAP four-disulfide core domain 6) gene. Two transcript variants encoding different isoforms have been found for this gene.

### Recommended Dilution

WB: 1: 500 - 1: 2000

Not yet tested in other applications.

### Images



Western blot analysis of lysates from MDA-MB cells, primary antibody was diluted at 1:1000, 4°C overnight

### Storage

-20°C for 1 year