

ZFP106 Polyclonal Antibody

Description

Product type	Primary Antibody
Code	BT-AP09673
Host	Rabbit
Isotype	IgG
Size	20ul, 50ul, 100ul
Immunogen	The antiserum was produced against synthesized peptide derived from human ZFP106. AA range:1833-1882
Mol wt	208883
Species reactivity	Human, Mouse, Monkey
Clonality	Polyclonal
Recommended application	WB, ELISA
Concentration	1 mg/ml
Full name	ZFP106 Antibody
Synonyms	ZFP106; SH3BP3; ZNF474; Zinc finger protein 106 homolog; Zfp-106; Zinc finger protein 474

This product is for research use only, not for use in human, therapeutic or diagnostic procedure.

Background

May be involved in transcriptional regulation as a weak repressor when alone, or a potent one when fused with a heterologous protein containing a KRAB B-domain.

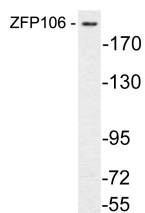
Recommended Dilution

WB: 1: 500 - 1: 2000

ELISA: 1: 10000

Not yet tested in other applications.

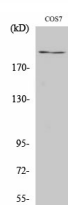
Images



Western blot analysis of lysate from COS7 cells, using ZFP106 antibody.



Western Blot analysis of various cells using ZFP106 Polyclonal Antibody. Secondary antibody was diluted at 1:20000



Western Blot analysis of COS7 cells using ZFP106 Polyclonal Antibody. Secondary antibody was diluted at 1:20000

Storage

-20°C for one year

501 Changsheng S Rd, Nanhu Dist, Jiaxing, Zhejiang, China

Tel: 86 21 31007137 | E-mail: save@bt-laboratory.com | www.bt-laboratory.com