

GPR6 Polyclonal Antibody

Description

Product type	Primary Antibody
Code	BT-AP09676
Host	Rabbit
Isotype	IgG
Size	20ul, 50ul, 100ul
Immunogen	Synthesized peptide derived from human protein . at AA range: 290-370
Mol wt	N/A
Species reactivity	Human, Mouse, Rat
Clonality	Polyclonal
Recommended application	WB, ELISA
Concentration	1 mg/ml
Full name	G-protein coupled receptor 6
Synonyms	G-protein coupled receptor 6 ;Sphingosine 1-phosphate receptor GPR6

This product is for research use only, not for use in human, therapeutic or diagnostic procedure.

Background

Receptor for the lysosphingolipid sphingosine 1-phosphate (S1P). S1P is a bioactive lysophospholipid that elicits diverse physiological effect on most types of cells and tissues. This receptor mediates its action by association with G proteins that activate a phosphatidylinositol-calcium second messenger system.,Belongs to the G-protein coupled receptor 1 family.,

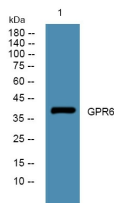
Recommended Dilution

WB: 1: 500 - 1: 2000

ELISA: 1: 5000 - 1: 20000

Not yet tested in other applications.

Images



Western blot analysis of lysates from KB cells, primary antibody was diluted at 1:1000, 4°C overnight

Storage

-20°C for 1 year