

## ZFYVE19 Polyclonal Antibody

### Description

|                                |   |
|--------------------------------|---|
| <b>Product type</b>            | Primary Antibody  |
| <b>Code</b>                    | BT-AP09677  |
| <b>Host</b>                    | Rabbit  |
| <b>Isotype</b>                 | IgG   |
| <b>Size</b>                    | 20ul, 50ul, 100ul   |
| <b>Immunogen</b>               | The antiserum was produced against synthesized peptide derived from human ZFYVE19. AA range:311-360 |
| <b>Mol wt</b>                  | 51530   |
| <b>Species reactivity</b>      | Human   |
| <b>Clonality</b>               | Polyclonal  |
| <b>Recommended application</b> | WB, IHC-p, ELISA  |
| <b>Concentration</b>           | 1 mg/ml   |
| <b>Full name</b>               | ZFYVE19 Antibody  |
| <b>Synonyms</b>                | ZFYVE19; MPFYVE; Zinc finger FYVE domain-containing protein 19; MLL partner containing FYVE domain  |

**This product is for research use only, not for use in human, therapeutic or diagnostic procedure.**

### Background

Zinc-finger proteins contain DNA-binding domains and have a wide variety of functions, most of which encompass some form of transcriptional activation or repression. ZFYVE19 (zinc finger, FYVE domain containing 19), also known as MPFYVE (MLL partner containing FYVE domain), is a 471 amino acid protein that contains one FYVE-type zinc finger. Expressed in heart, brain, kidney, skeletal muscle and liver, ZFYVE19 may participate in transcriptional regulation events within the cell. Defects in the gene encoding ZFYVE19 are associated with acute myeloblastic leukemia (AML), a rapidly progressing cancer of the myeloid line of white blood cells that is characterized by fever, anemia, bone pain, shortness of breath and frequent infections. Three isoforms of ZFYVE19 exist due to alternative splicing events.

### Recommended Dilution

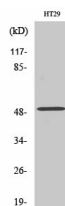
WB: 1: 500 - 1: 2000

IHC: 1: 100 - 1: 300

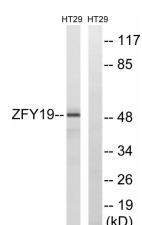
ELISA: 1: 40000

Not yet tested in other applications.

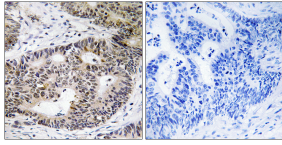
### Images



Western Blot analysis of various cells using ZFYVE19 Polyclonal Antibody. Secondary antibody was diluted at 1:20000



Western blot analysis of lysates from HT-29 cells, using ZFYVE19 Antibody. The lane on the right is blocked with the synthesized peptide.



Immunohistochemistry analysis of paraffin-embedded human colon carcinoma tissue, using ZFYVE19 Antibody. The picture on the right is blocked with the synthesized peptide.

### Storage

-20°C for one year

501 Changsheng S Rd, Nanhu Dist, Jiaxing, Zhejiang, China

Tel: 86 21 31007137 | E-mail: [save@bt-laboratory.com](mailto:save@bt-laboratory.com) | [www.bt-laboratory.com](http://www.bt-laboratory.com)