

## ZIP1 Polyclonal Antibody

### Description

<b>Product type</b>	Primary Antibody
<b>Code</b>	BT-AP09683
<b>Host</b>	Rabbit
<b>Isotype</b>	IgG
<b>Size</b>	20ul, 50ul, 100ul
<b>Immunogen</b>	The antiserum was produced against synthesized peptide derived from human SLC39A1. AA range:111-160
<b>Mol wt</b>	34250
<b>Species reactivity</b>	Human
<b>Clonality</b>	Polyclonal
<b>Recommended application</b>	WB, ELISA
<b>Concentration</b>	1 mg/ml
<b>Full name</b>	ZIP1 Antibody
<b>Synonyms</b>	SLC39A1; IRT1; ZIP1; ZIRTL; CGI-08; CGI-71; Zinc transporter ZIP1; Solute carrier family 39 member 1; Zinc-iron-regulated transporter-like; Zrt- and Irt-like protein 1; ZIP-1; hZIP1

**This product is for research use only, not for use in human, therapeutic or diagnostic procedure.**

### Background

SLC39A1 encodes a member of the zinc-iron permease family. The solute carrier family 39 member 1 is localized to the cell membrane and acts as a zinc uptake transporter. SLC39A1 has been linked to prostate cancer, breast cancer, and Alzheimer's disease. Alternative splicing results in multiple transcript variants.

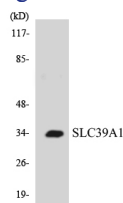
### Recommended Dilution

WB: 1: 500 - 1: 2000

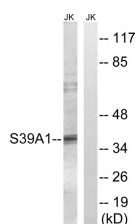
ELISA: 1: 5000

Not yet tested in other applications.

### Images



Western blot analysis of the lysates from COLO205 cells using SLC39A1 antibody.



Western blot analysis of lysates from Jurkat cells, using SLC39A1 Antibody. The lane on the right is blocked with the synthesized peptide.

## Storage

-20°C for one year

501 Changsheng S Rd, Nanhu Dist, Jiaxing, Zhejiang, China

Tel: 86 21 31007137 | E-mail: [save@bt-laboratory.com](mailto:save@bt-laboratory.com) | [www.bt-laboratory.com](http://www.bt-laboratory.com)