

## ZIP2 Polyclonal Antibody

### Description

Product type	Primary Antibody
Code	BT-AP09684
Host	Rabbit
Isotype	IgG
Size	20ul, 50ul, 100ul
Immunogen	The antiserum was produced against synthesized peptide derived from human SLC39A2. AA range:11-60
Mol wt	32751
Species reactivity	Human
Clonality	Polyclonal
Recommended application	WB, ELISA
Concentration	1 mg/ml
Full name	ZIP2 Antibody
Synonyms	SLC39A2; ZIP2; Zinc transporter ZIP2; 6A1; Eti-1; Solute carrier family 39 member 2; Zrt- and Irt-like protein 2; ZIP-2; hZIP2

This product is for research use only, not for use in human, therapeutic or diagnostic procedure.

### Background

SLC39A2 encodes a member of the ZIP family of metal ion transporters. The solute carrier family 39 member 2 functions as a zinc transporter. Mutations in this gene may be associated with susceptibility to carotid artery disease. Multiple transcript variants have been described.

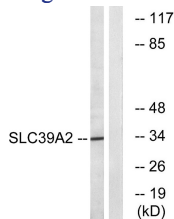
### Recommended Dilution

WB: 1: 500 - 1: 2000

ELISA: 1: 10000

Not yet tested in other applications.

### Images



Western blot analysis of lysates from Jurkat cells, using SLC39A2 Antibody. The lane on the right is blocked with the synthesized peptide.

### Storage

-20°C for one year