

## ZIP4 Polyclonal Antibody

### Description

<b>Product type</b>	Primary Antibody
<b>Code</b>	BT-AP09685
<b>Host</b>	Rabbit
<b>Isotype</b>	IgG
<b>Size</b>	20ul, 50ul, 100ul
<b>Immunogen</b>	The antiserum was produced against synthesized peptide derived from human SLC39A4. AA range:431-480
<b>Mol wt</b>	68422
<b>Species reactivity</b>	Human
<b>Clonality</b>	Polyclonal
<b>Recommended application</b>	WB, ELISA
<b>Concentration</b>	1 mg/ml
<b>Full name</b>	ZIP4 Antibody
<b>Synonyms</b>	SLC39A4; ZIP4; Zinc transporter ZIP4; Solute carrier family 39 member 4; Zrt- and Irt-like protein 4; ZIP-4

This product is for research use only, not for use in human, therapeutic or diagnostic procedure.

### Background

SLC39A4 (solute carrier family 39 member 4) encodes a member of the zinc/iron-regulated transporter-like protein (ZIP) family. The encoded protein localizes to cell membranes and is required for zinc uptake in the intestine. Mutations in SLC39A4 result in acrodermatitis enteropathica. Multiple transcript variants encoding different isoforms have been found for SLC39A4.

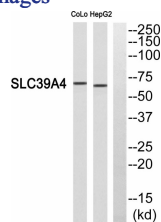
### Recommended Dilution

WB: 1: 500 - 1: 2000

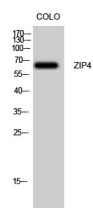
ELISA: 1: 40000

Not yet tested in other applications.

### Images



Western blot analysis of SLC39A4 Antibody. The lane on the right is blocked with the SLC39A4 peptide.



Western Blot analysis of Colo cells using ZIP4 Polyclonal Antibody. Secondary antibody was diluted at 1:20000

## Storage

-20°C for one year

501 Changsheng S Rd, Nanhu Dist, Jiaxing, Zhejiang, China

Tel: 86 21 31007137 | E-mail: [save@bt-laboratory.com](mailto:save@bt-laboratory.com) | [www.bt-laboratory.com](http://www.bt-laboratory.com)