

ZIP9 Polyclonal Antibody

Description

| | |
|--------------------------------|---|
| Product type | Primary Antibody |
| Code | BT-AP09687 |
| Host | Rabbit |
| Isotype | IgG |
| Size | 20ul, 50ul, 100ul |
| Immunogen | The antiserum was produced against synthesized peptide derived from human SLC39A9. AA range:101-150 |
| Mol wt | 32251 |
| Species reactivity | Human, Rat |
| Clonality | Polyclonal |
| Recommended application | WB, ELISA |
| Concentration | 1 mg/ml |
| Full name | ZIP9 Antibody |
| Synonyms | SLC39A9; ZIP9; Zinc transporter ZIP9; Solute carrier family 39 member 9; Zrt- and Irt-like protein 9; ZIP-9 |

This product is for research use only, not for use in human, therapeutic or diagnostic procedure.

Background

May act as a zinc-influx transporter.

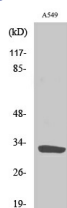
Recommended Dilution

WB: 1: 500 - 1: 2000

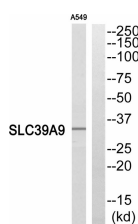
ELISA: 1: 10000

Not yet tested in other applications.

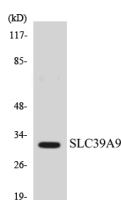
Images



Western Blot analysis of various cells using ZIP9 Polyclonal Antibody. Secondary antibody was diluted at 1:20000



Western blot analysis of SLC39A9 Antibody. The lane on the right is blocked with the SLC39A9 peptide.



Western blot analysis of the lysates from HeLa cells using SLC39A9 antibody.

Storage

-20°C for one year

501 Changsheng S Rd, Nanhu Dist, Jiaxing, Zhejiang, China

Tel: 86 21 31007137 | E-mail: save@bt-laboratory.com | www.bt-laboratory.com