

ZIS Polyclonal Antibody

Description

Product type	Primary Antibody
Code	BT-AP09688
Host	Rabbit
Isotype	IgG
Size	20ul, 50ul, 100ul
Immunogen	The antiserum was produced against synthesized peptide derived from human ZNF265. AA range:106-155
Mol wt	37404
Species reactivity	Human, Mouse, Rat
Clonality	Polyclonal
Recommended application	WB, IHC-p, IF, ELISA
Concentration	1 mg/ml
Full name	ZIS Antibody
Synonyms	ZRANB2; ZIS; ZNF265; Zinc finger Ran-binding domain-containing protein 2; Zinc finger protein 265; Zinc finger; splicing

This product is for research use only, not for use in human, therapeutic or diagnostic procedure.

Background

ZRANB2, also named as ZIS and ZNF265, is a splice factor required for alternative splicing of TRA2B/SFRS10 transcripts. It may interfere with constitutive 5'-splice site selection. The calculated MW of ZRANB2 is 330aa, 37 kDa or 320aa, 36 kDa. We always got the ~48 kDa in our detection. The immunogen of this antibody is 1-241aa. No other protein can be recognized by this antibody from the sequence BLAST results.

Recommended Dilution

WB: 1: 500 - 1: 2000

IHC: 1: 100 - 1: 300

IF: 1: 200 - 1: 1000

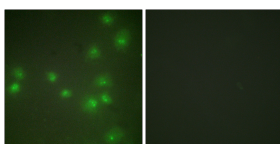
ELISA: 1: 10000

Not yet tested in other applications.

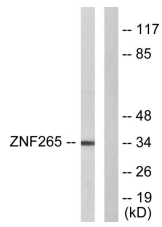
Images



Western Blot analysis of various cells using ZIS Polyclonal Antibody. Secondary antibody was diluted at 1:20000 cells nucleus.



Immunofluorescence analysis of HUVEC cells, using ZNF265 Antibody. The picture on the right is blocked with the synthesized peptide.



Western blot analysis of lysates from HeLa cells, using ZNF265 Antibody. The lane on the right is blocked with the synthesized peptide.

Storage

-20°C for one year

501 Changsheng S Rd, Nanhu Dist, Jiaxing, Zhejiang, China

Tel: 86 21 31007137 | E-mail: save@bt-laboratory.com | www.bt-laboratory.com