

## ZNF134 Polyclonal Antibody

### Description

<b>Product type</b>	Primary Antibody
<b>Code</b>	BT-AP09711
<b>Host</b>	Rabbit
<b>Isotype</b>	IgG
<b>Size</b>	20ul, 50ul, 100ul
<b>Immunogen</b>	The antiserum was produced against synthesized peptide derived from human ZNF134. AA range:116-165
<b>Mol wt</b>	40297
<b>Species reactivity</b>	Human, Monkey
<b>Clonality</b>	Polyclonal
<b>Recommended application</b>	WB, IHC-p, ELISA
<b>Concentration</b>	1 mg/ml
<b>Full name</b>	ZNF134 Antibody
<b>Synonyms</b>	ZNF134; Zinc finger protein 134

This product is for research use only, not for use in human, therapeutic or diagnostic procedure.

### Background

May be involved in transcriptional regulation.

### Recommended Dilution

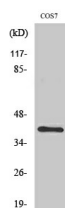
WB: 1: 500 - 1: 2000

IHC: 1: 100 - 1: 300

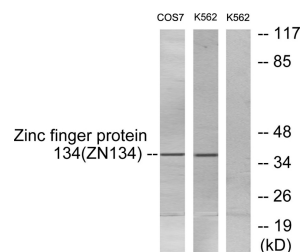
ELISA: 1: 10000

Not yet tested in other applications.

### Images



Western Blot analysis of various cells using ZNF134 Polyclonal Antibody diluted at 1:1000.  
Secondary antibody was diluted at 1:20000 cells nucleus.



Western blot analysis of lysates from COS7 and K562 cells, using ZNF134 Antibody. The lane on the right is blocked with the synthesized peptide.

### Storage

-20°C for one year

