

## ZNF227 Polyclonal Antibody

### Description

<b>Product type</b>	Primary Antibody
<b>Code</b>	BT-AP09713
<b>Host</b>	Rabbit
<b>Isotype</b>	IgG
<b>Size</b>	20ul, 50ul, 100ul
<b>Immunogen</b>	Synthesized peptide derived from the Internal region of human ZNF227.
<b>Mol wt</b>	92033
<b>Species reactivity</b>	Human
<b>Clonality</b>	Polyclonal
<b>Recommended application</b>	WB, IHC-p, ELISA
<b>Concentration</b>	1 mg/ml
<b>Full name</b>	ZNF227 Antibody
<b>Synonyms</b>	ZNF227; Zinc finger protein 227

This product is for research use only, not for use in human, therapeutic or diagnostic procedure.

### Background

ZNF227 (Zinc Finger Protein 227) is a Protein Coding gene. Among its related pathways are Gene Expression. Gene Ontology (GO) annotations related to this gene include nucleic acid binding and transcription factor activity, sequence-specific DNA binding. An important paralog of this gene is ZNF229. May be involved in transcriptional regulation.

### Recommended Dilution

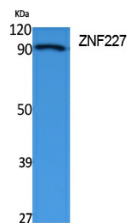
WB: 1: 500 - 1: 2000

IHC-p: 1: 100 - 300

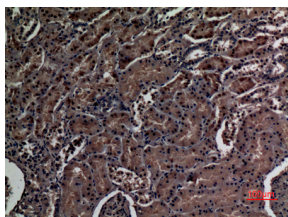
ELISA: 1: 40000

Not yet tested in other applications.

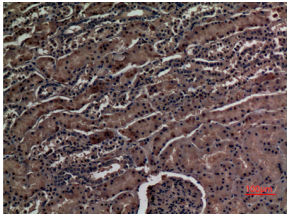
### Images



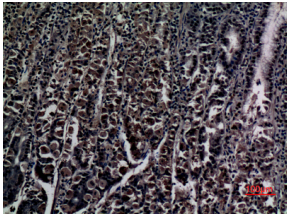
Western Blot analysis of extracts from Jurkat cells, using ZNF227 Polyclonal Antibody. Secondary antibody was diluted at 1:20000 cells nucleus.



Immunohistochemical analysis of paraffin-embedded human-kidney, antibody was diluted at 1:100



Immunohistochemical analysis of paraffin-embedded human-kidney, antibody was diluted at 1:100



Immunohistochemical analysis of paraffin-embedded human-stomach, antibody was diluted at 1:100

### Storage

-20°C for one year

501 Changsheng S Rd, Nanhu Dist, Jiaxing, Zhejiang, China

Tel: 86 21 31007137 | E-mail: [save@bt-laboratory.com](mailto:save@bt-laboratory.com) | [www.bt-laboratory.com](http://www.bt-laboratory.com)