

## ZNF23 Polyclonal Antibody

### Description

|                                |   |
|--------------------------------|---|
| <b>Product type</b>            | Primary Antibody  |
| <b>Code</b>                    | BT-AP09714  |
| <b>Host</b>                    | Rabbit  |
| <b>Isotype</b>                 | IgG   |
| <b>Size</b>                    | 20ul, 50ul, 100ul   |
| <b>Immunogen</b>               | The antiserum was produced against synthesized peptide derived from human ZNF23. AA range:151-200                                 |
| <b>Mol wt</b>                  | 73059   |
| <b>Species reactivity</b>      | Human   |
| <b>Clonality</b>               | Polyclonal  |
| <b>Recommended application</b> | WB, IHC-p, IF, ELISA  |
| <b>Concentration</b>           | 1 mg/ml   |
| <b>Full name</b>               | ZNF23 Antibody  |
| <b>Synonyms</b>                | ZNF23; KOX16; ZNF359; ZNF612; Zinc finger protein 23; Zinc finger protein 359; Zinc finger protein 612; Zinc finger protein KOX16 |

This product is for research use only, not for use in human, therapeutic or diagnostic procedure.

### Background

ZNF23 (Zinc Finger Protein 23) is a Protein Coding gene. Among its related pathways are Gene Expression. GO annotations related to this gene include nucleic acid binding and transcription factor activity, sequence-specific DNA binding. An important paralog of this gene is ZNF70.

### Recommended Dilution

WB: 1: 500 - 1: 2000

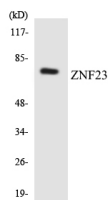
IHC: 1: 100 - 1: 300

IF: 1: 200 - 1: 1000

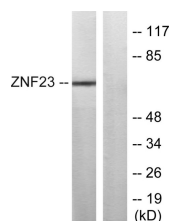
ELISA: 1: 10000

Not yet tested in other applications.

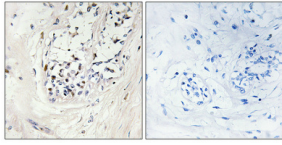
### Images



Western blot analysis of the lysates from RAW264.7 cells using ZNF23 antibody.



Western blot analysis of lysates from LOVO cells, using ZNF23 Antibody. The lane on the right is blocked with the synthesized peptide.



Immunohistochemical analysis of paraffin-embedded Human breast cancer. Antibody was diluted at 1:100(4° overnight). High-pressure and temperature Tris-EDTA,pH8.0 was used for antigen retrieval. Negative control (right) obtained from antibody was pre-absorbed by immunogen peptide.

### Storage

-20°C for one year

501 Changsheng S Rd, Nanhu Dist, Jiaxing, Zhejiang, China

Tel: 86 21 31007137 | E-mail: [save@bt-laboratory.com](mailto:save@bt-laboratory.com) | [www.bt-laboratory.com](http://www.bt-laboratory.com)