

ZNF232 Polyclonal Antibody

Description

Product type	Primary Antibody
Code	BT-AP09715
Host	Rabbit
Isotype	IgG
Size	20ul, 50ul, 100ul
Immunogen	The antiserum was produced against synthesized peptide derived from human ZNF232. AA range:171-220
Mol wt	47688
Species reactivity	Human
Clonality	Polyclonal
Recommended application	IHC-p, ELISA
Concentration	1 mg/ml
Full name	ZNF232 Antibody
Synonyms	ZNF232; ZSCAN11; Zinc finger protein 232; Zinc finger and SCAN domain-containing protein 11

This product is for research use only, not for use in human, therapeutic or diagnostic procedure.

Background

ZNF232 (Zinc Finger Protein 232) is a Protein Coding gene. GO annotations related to this gene include nucleic acid binding and transcription factor activity, sequence-specific DNA binding. An important paralog of this gene is ZSCAN16.

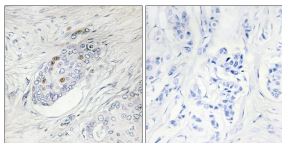
Recommended Dilution

IHC: 1: 100 - 1: 300

ELISA: 1: 5000

Not yet tested in other applications.

Images



Immunohistochemistry analysis of paraffin-embedded human breast carcinoma, using ZNF232 Antibody. The picture on the right is blocked with the synthesized peptide.

Storage

-20°C for one year

501 Changsheng S Rd, Nanhu Dist, Jiaxing, Zhejiang, China

Tel: 86 21 31007137 | E-mail: save@bt-laboratory.com | www.bt-laboratory.com