

## ZNF262 Polyclonal Antibody

### Description

<b>Product type</b>	Primary Antibody
<b>Code</b>	BT-AP09717
<b>Host</b>	Rabbit
<b>Isotype</b>	IgG
<b>Size</b>	20ul, 50ul, 100ul
<b>Immunogen</b>	The antiserum was produced against synthesized peptide derived from human ZMYM4. AA range:801-850
<b>Mol wt</b>	172788
<b>Species reactivity</b>	Human, Mouse
<b>Clonality</b>	Polyclonal
<b>Recommended application</b>	WB, IHC-p, ELISA
<b>Concentration</b>	1 mg/ml
<b>Full name</b>	ZNF262 Antibody
<b>Synonyms</b>	ZMYM4; KIAA0425; ZNF262; Zinc finger MYM-type protein 4; Zinc finger protein 262

**This product is for research use only, not for use in human, therapeutic or diagnostic procedure.**

### Background

ZMYM4 (Zinc Finger MYM-Type Containing 4) is a Protein Coding gene. Diseases associated with ZMYM4 include non-syndromic x-linked intellectual disability. An important paralog of this gene is ZMYM6.

### Recommended Dilution

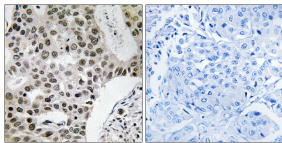
WB: 1: 500 - 1: 2000

IHC: 1: 100 - 1: 300

ELISA: 1: 10000

Not yet tested in other applications.

### Images



Immunohistochemistry analysis of paraffin-embedded human breast carcinoma tissue, using ZMYM4 Antibody. The picture on the right is blocked with the synthesized peptide.

### Storage

-20°C for one year

501 Changsheng S Rd, Nanhu Dist, Jiaxing, Zhejiang, China

Tel: 86 21 31007137 | E-mail: [save@bt-laboratory.com](mailto:save@bt-laboratory.com) | [www.bt-laboratory.com](http://www.bt-laboratory.com)