

ZNF287 Polyclonal Antibody

Description

Product type	Primary Antibody
Code	BT-AP09718
Host	Rabbit
Isotype	IgG
Size	20ul, 50ul, 100ul
Immunogen	The antiserum was produced against synthesized peptide derived from human ZNF287. AA range:241-290
Mol wt	87565
Species reactivity	Human
Clonality	Polyclonal
Recommended application	WB, IHC-p, ELISA
Concentration	1 mg/ml
Full name	ZNF287 Antibody
Synonyms	ZNF287; ZKSCAN13; Zinc finger protein 287; Zinc finger protein with KRAB and SCAN domains 13

This product is for research use only, not for use in human, therapeutic or diagnostic procedure.

Background

ZNF287 (zinc finger protein 287) encodes a member of the krueppel family of zinc finger proteins, suggesting a role as a transcription factor. Its specific function has not been determined. ZNF287 is located near the Smith-Magenis syndrome region on chromosome 17.

Recommended Dilution

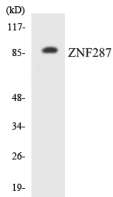
WB: 1: 500 - 1: 2000

IHC: 1: 100 - 1: 300

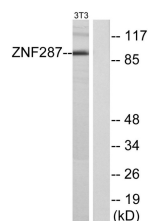
ELISA: 1: 5000

Not yet tested in other applications.

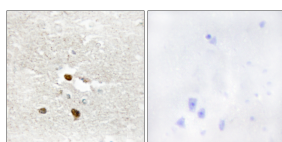
Images



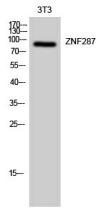
Western blot analysis of the lysates from Jurkat cells using ZNF287 antibody.



Western blot analysis of lysates from NIH/3T3 cells, using ZNF287 Antibody. The lane on the right is blocked with the synthesized peptide.



Immunohistochemistry analysis of paraffin-embedded human brain tissue, using ZNF287 Antibody. The picture on the right is blocked with the synthesized peptide.



Western Blot analysis of 3T3 cells using ZNF287 Polyclonal Antibody. Secondary antibody was diluted at 1:20000 cells nucleus.

Storage

-20°C for one year

501 Changsheng S Rd, Nanhu Dist, Jiaxing, Zhejiang, China

Tel: 86 21 31007137 | E-mail: save@bt-laboratory.com | www.bt-laboratory.com