

ZNF397 Polyclonal Antibody

Description

Product type	Primary Antibody
Code	BT-AP09723
Host	Rabbit
Isotype	IgG
Size	20ul, 50ul, 100ul
Immunogen	The antiserum was produced against synthesized peptide derived from human ZNF397. AA range:10-59
Mol wt	61139
Species reactivity	Human
Clonality	Polyclonal
Recommended application	WB, IHC-p, IF, ELISA
Concentration	1 mg/ml
Full name	ZNF397 Antibody
Synonyms	ZNF397; ZNF47; ZSCAN15; Zinc finger protein 397; Zinc finger and SCAN domain-containing protein 15; Zinc finger protein 47

This product is for research use only, not for use in human, therapeutic or diagnostic procedure.

Background

ZNF397 encodes Zinc finger protein 397 with a N-terminal SCAN domain, and the longer isoform contains nine C2H2-type zinc finger repeats in the C-terminal domain. The protein localizes to centromeres during interphase and early prophase, and different isoforms can repress or activate transcription in transfection studies. Multiple transcript variants encoding different isoforms have been found for this gene. Additional variants have been described, but their biological validity has not been determined.

Recommended Dilution

WB: 1: 500 - 1: 2000

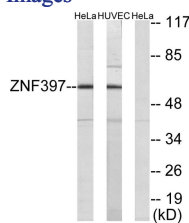
IHC: 1: 100 - 1: 300

IF: 1: 200 - 1: 1000

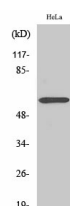
ELISA: 1: 5000

Not yet tested in other applications.

Images



Western blot analysis of lysates from HeLa and HUVEC cells, using ZNF397 Antibody. The lane on the right is blocked with the synthesized peptide.



Western blot analysis of various cells using ZNF397 Polyclonal Antibody. Secondary antibody was diluted at 1:20000

Storage

-20°C for one year

501 Changsheng S Rd, Nanhu Dist, Jiaxing, Zhejiang, China

Tel: 86 21 31007137 | E-mail: save@bt-laboratory.com | www.bt-laboratory.com