

ZNF420 Polyclonal Antibody

Description

Product type	Primary Antibody
Code	BT-AP09724
Host	Rabbit
Isotype	IgG
Size	20ul, 50ul, 100ul
Immunogen	The antiserum was produced against synthesized peptide derived from human ZNF420. AA range:301-350
Mol wt	80247
Species reactivity	Human, Mouse
Clonality	Polyclonal
Recommended application	WB, ELISA
Concentration	1 mg/ml
Full name	ZNF420 Antibody
Synonyms	ZNF420; Zinc finger protein 420

This product is for research use only, not for use in human, therapeutic or diagnostic procedure.

Background

Zinc finger protein 420 encoded by ZNF420 is a KRAB-type zinc finger protein that negatively-regulates p53-mediated apoptosis. Under stress conditions, the encoded protein is phosphorylated by ATM and dissociates from p53, which activates p53 and initiates apoptosis.

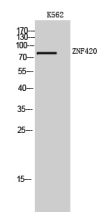
Recommended Dilution

WB: 1: 500 - 1: 2000

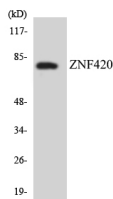
ELISA: 1: 40000

Not yet tested in other applications.

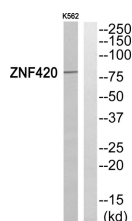
Images



Western Blot analysis of K562 cells using ZNF420 Polyclonal Antibody. Secondary antibody was diluted at 1:20000 cells nucleus.



Western blot analysis of the lysates from COLO205 cells using ZNF420 antibody.



Western blot analysis of ZNF420 Antibody. The lane on the right is blocked with the ZNF420 peptide.

Storage

-20°C for one year

501 Changsheng S Rd, Nanhu Dist, Jiaxing, Zhejiang, China

Tel: 86 21 31007137 | E-mail: save@bt-laboratory.com | www.bt-laboratory.com