

ZNF436 Polyclonal Antibody

Description

Product type	Primary Antibody
Code	BT-AP09725
Host	Rabbit
Isotype	IgG
Size	20ul, 50ul, 100ul
Immunogen	The antiserum was produced against synthesized peptide derived from human ZNF436. AA range:71-120
Mol wt	49657
Species reactivity	Human
Clonality	Polyclonal
Recommended application	WB, IHC-p, ELISA
Concentration	1 mg/ml
Full name	ZNF436 Antibody
Synonyms	ZNF436; KIAA1710; Zinc finger protein 436

This product is for research use only, not for use in human, therapeutic or diagnostic procedure.

Background

May be a transcriptional repressor.

Recommended Dilution

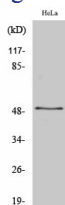
WB: 1: 500 - 1: 2000

IHC: 1: 100 - 1: 300

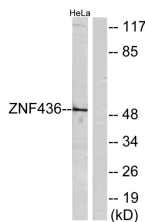
ELISA: 1: 20000

Not yet tested in other applications.

Images



Western Blot analysis of various cells using ZNF436 Polyclonal Antibody. Secondary antibody was diluted at 1:20000 cells nucleus.



Western blot analysis of lysates from HeLa cells, using ZNF436 Antibody. The lane on the right is blocked with the synthesized peptide.

Storage

-20°C for one year