

## ZNF498 Polyclonal Antibody

### Description

<b>Product type</b>	Primary Antibody
<b>Code</b>	BT-AP09728
<b>Host</b>	Rabbit
<b>Isotype</b>	IgG
<b>Size</b>	20ul, 50ul, 100ul
<b>Immunogen</b>	The antiserum was produced against synthesized peptide derived from human ZNF498. AA range:331-380
<b>Mol wt</b>	35220
<b>Species reactivity</b>	Human, Monkey
<b>Clonality</b>	Polyclonal
<b>Recommended application</b>	WB, ELISA
<b>Concentration</b>	1 mg/ml
<b>Full name</b>	ZNF498 Antibody
<b>Synonyms</b>	ZNF498; ZSCAN25; Zinc finger protein 498; Zinc finger and SCAN domain-containing protein 25

This product is for research use only, not for use in human, therapeutic or diagnostic procedure.

### Background

ZSCAN25 encodes a protein that bears some similarity to zinc finger proteins, which are involved in DNA binding and protein-protein interactions. Multiple alternatively spliced transcript variants have been identified, but the full-length nature for most of them has not been determined.

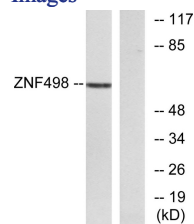
### Recommended Dilution

WB: 1: 500 - 1: 2000

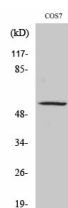
ELISA: 1: 40000

Not yet tested in other applications.

### Images



Western blot analysis of lysates from COS7 cells, using ZNF498 Antibody. The lane on the right is blocked with the synthesized peptide.



Western Blot analysis of various cells using ZNF498 Polyclonal Antibody. Secondary antibody was diluted at 1:20000 cells nucleus.

### Storage

-20°C for one year

