

ZNF592 Polyclonal Antibody

Description

Product type	Primary Antibody
Code	BT-AP09732
Host	Rabbit
Isotype	IgG
Size	20ul, 50ul, 100ul
Immunogen	The antiserum was produced against synthesized peptide derived from human ZNF592. AA range:961-1010
Mol wt	137555
Species reactivity	Human, Mouse
Clonality	Polyclonal
Recommended application	WB, IHC-p, ELISA
Concentration	1 mg/ml
Full name	ZNF592 Antibody
Synonyms	ZNF592; KIAA0211; Zinc finger protein 592

This product is for research use only, not for use in human, therapeutic or diagnostic procedure.

Background

ZNF592 (zinc finger protein 592) is thought to play a role in a complex developmental pathway and the regulation of genes involved in cerebellar development. Mutations in ZNF592 have been associated with autosomal recessive spinocerebellar ataxia.

Recommended Dilution

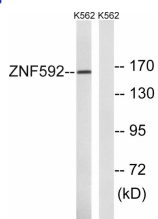
WB: 1: 500 - 1: 2000

IHC: 1: 100 - 1: 300

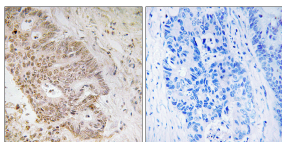
ELISA: 1: 40000

Not yet tested in other applications.

Images



Western blot analysis of lysates from K562 cells, using ZNF592 Antibody. The lane on the right is blocked with the synthesized peptide.



Immunohistochemistry analysis of paraffin-embedded human colon carcinoma tissue, using ZNF592 Antibody. The picture on the right is blocked with the synthesized peptide.

Storage

-20°C for one year