

ZNF608 Polyclonal Antibody

Description

Product type	Primary Antibody
Code	BT-AP09735
Host	Rabbit
Isotype	IgG
Size	20ul, 50ul, 100ul
Immunogen	The antiserum was produced against synthesized peptide derived from human ZNF608. AA range:1231-1280
Mol wt	162221
Species reactivity	Human, Mouse
Clonality	Polyclonal
Recommended application	WB, IHC-p, ELISA
Concentration	1 mg/ml
Full name	ZNF608 Antibody
Synonyms	ZNF608; KIAA1281; Zinc finger protein 608; Renal carcinoma antigen NY-REN-36

This product is for research use only, not for use in human, therapeutic or diagnostic procedure.

Background

ZNF608 (Zinc Finger Protein 608) is a Protein Coding gene. Diseases associated with ZNF608 include renal cell carcinoma. An important paralog of this gene is ZNF609.

Recommended Dilution

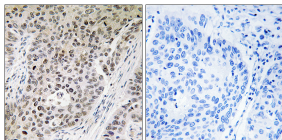
WB: 1: 500 - 1: 2000

IHC: 1: 100 - 1: 300

ELISA: 1: 5000

Not yet tested in other applications.

Images



Immunohistochemistry analysis of paraffin-embedded human lung carcinoma tissue, using ZNF608 Antibody. The picture on the right is blocked with the synthesized peptide.



Western Blot analysis of various cells using ZNF608 Polyclonal Antibody diluted at 1:500. Secondary antibody was diluted at 1:20000

Storage

-20°C for one year