

ZNF682 Polyclonal Antibody

Description

| | |
|--------------------------------|--|
| Product type | Primary Antibody |
| Code | BT-AP09737 |
| Host | Rabbit |
| Isotype | IgG |
| Size | 20ul, 50ul, 100ul |
| Immunogen | The antiserum was produced against synthesized peptide derived from human ZNF682. AA range:21-70 |
| Mol wt | 58361 |
| Species reactivity | Human |
| Clonality | Polyclonal |
| Recommended application | WB, ELISA |
| Concentration | 1 mg/ml |
| Full name | ZNF682 Antibody |
| Synonyms | ZNF682; Zinc finger protein 682 |

This product is for research use only, not for use in human, therapeutic or diagnostic procedure.

Background

Zinc-finger proteins contain DNA-binding domains and have a wide variety of functions, most of which encompass some form of transcriptional activation or repression. The majority of zinc-finger proteins contain a Krueppel-type DNA binding domain and a KRAB domain, which is thought to interact with KAP1, thereby recruiting histone modifying proteins. Zinc finger protein 682 (ZNF682) is a 498 amino acid member of the Krueppel C2H2-type zinc-finger protein family. Localized to the nucleus, ZNF682 contains eleven C2H2-type zinc fingers and one KRAB domain through which it is thought to be involved in DNA-binding and transcriptional regulation. Two isoforms of ZNF682 exist as a result of alternative splicing events.

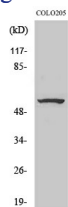
Recommended Dilution

WB: 1: 500 - 1: 2000

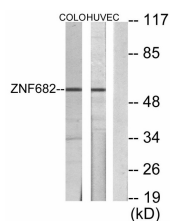
ELISA: 1: 20000

Not yet tested in other applications.

Images



Western Blot analysis of various cells using ZNF682 Polyclonal Antibody. Secondary antibody was diluted at 1:20000 cells nucleus.



Western blot analysis of lysates from COLO205 and HUVEC cells, using ZNF682 Antibody. The lane on the right is blocked with the synthesized peptide.

Storage

-20°C for one year

501 Changsheng S Rd, Nanhu Dist, Jiaxing, Zhejiang, China

Tel: 86 21 31007137 | E-mail: save@bt-laboratory.com | www.bt-laboratory.com