

## ZnT-8 Polyclonal Antibody

### Description

<b>Product type</b>	Primary Antibody
<b>Code</b>	BT-AP09752
<b>Host</b>	Rabbit
<b>Isotype</b>	IgG
<b>Size</b>	20ul, 50ul, 100ul
<b>Immunogen</b>	The antiserum was produced against synthesized peptide derived from human SLC30A8. AA range:171-220
<b>Mol wt</b>	40729
<b>Species reactivity</b>	Human
<b>Clonality</b>	Polyclonal
<b>Recommended application</b>	WB, ELISA
<b>Concentration</b>	1 mg/ml
<b>Full name</b>	ZnT-8 Antibody
<b>Synonyms</b>	SLC30A8; ZNT8; Zinc transporter 8; ZnT-8; Solute carrier family 30 member 8

This product is for research use only, not for use in human, therapeutic or diagnostic procedure.

### Background

Zinc transporter 8 encoded by SLC30A8 is a zinc efflux transporter involved in the accumulation of zinc in intracellular vesicles. SLC30A8 is expressed at a high level only in the pancreas, particularly in islets of Langerhans. The encoded protein colocalizes with insulin in the secretory pathway granules of the insulin-secreting INS-1 cells. Allelic variants of this gene exist that confer susceptibility to diabetes mellitus, noninsulin-dependent (NIDDM). Several transcript variants encoding different isoforms have been found for this gene.

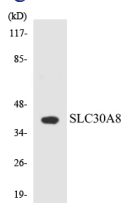
### Recommended Dilution

WB: 1: 500 - 1: 2000

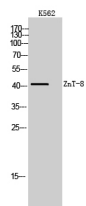
ELISA: 1: 10000

Not yet tested in other applications.

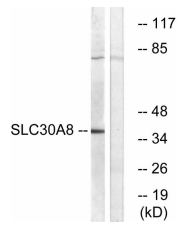
### Images



Western blot analysis of the lysates from HeLa cells using SLC30A8 antibody.



Western Blot analysis of K562 cells using ZnT-8 Polyclonal Antibody. Secondary antibody was diluted at 1:20000



Western blot analysis of lysates from K562 cells, using SLC30A8 Antibody. The lane on the right is blocked with the synthesized peptide.

### Storage

-20°C for one year

501 Changsheng S Rd, Nanhu Dist, Jiaxing, Zhejiang, China

Tel: 86 21 31007137 | E-mail: [save@bt-laboratory.com](mailto:save@bt-laboratory.com) | [www.bt-laboratory.com](http://www.bt-laboratory.com)