

ZnT-9 Polyclonal Antibody

Description

Product type	Primary Antibody
Code	BT-AP09754
Host	Rabbit
Isotype	IgG
Size	20ul, 50ul, 100ul
Immunogen	The antiserum was produced against synthesized peptide derived from human SLC30A9. AA range:181-230
Mol wt	40729
Species reactivity	Human, Mouse, Rat
Clonality	Polyclonal
Recommended application	WB, ELISA
Concentration	1 mg/ml
Full name	ZnT-9 Antibody
Synonyms	SLC30A9; C4orf1; HUEL; Zinc transporter 9; ZnT-9; Human embryonic lung protein; HuEL; Solute carrier family 30 member 9

This product is for research use only, not for use in human, therapeutic or diagnostic procedure.

Background

Zinc transporter 8 encoded by SLC30A8 is a zinc efflux transporter involved in the accumulation of zinc in intracellular vesicles. SLC30A8 is expressed at a high level only in the pancreas, particularly in islets of Langerhans. The encoded protein colocalizes with insulin in the secretory pathway granules of the insulin-secreting INS-1 cells. Allelic variants of this gene exist that confer susceptibility to diabetes mellitus, noninsulin-dependent (NIDDM). Several transcript variants encoding different isoforms have been found for this gene.

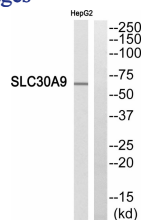
Recommended Dilution

WB: 1: 500 - 1: 2000

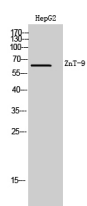
ELISA: 1: 20000

Not yet tested in other applications.

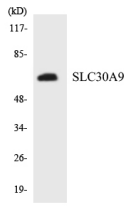
Images



Western blot analysis of SLC30A9 Antibody. The lane on the right is blocked with the SLC30A9 peptide.



Western Blot analysis of HepG2 cells using ZnT-9 Polyclonal Antibody. Secondary antibody was diluted at 1:20000



Western blot analysis of the lysates from K562 cells using SLC30A9 antibody.

Storage

-20°C for one year

501 Changsheng S Rd, Nanhu Dist, Jiaxing, Zhejiang, China

Tel: 86 21 31007137 | E-mail: save@bt-laboratory.com | www.bt-laboratory.com