

## ZO-2 Polyclonal Antibody

### Description

<b>Product type</b>	Primary Antibody
<b>Code</b>	BT-AP09756
<b>Host</b>	Rabbit
<b>Isotype</b>	IgG
<b>Size</b>	20ul, 50ul, 100ul
<b>Immunogen</b>	The antiserum was produced against synthesized peptide derived from human ZO-2. AA range:1063-1112
<b>Mol wt</b>	133972
<b>Species reactivity</b>	Human, Mouse, Rat
<b>Clonality</b>	Polyclonal
<b>Recommended application</b>	WB, ELISA
<b>Concentration</b>	1 mg/ml
<b>Full name</b>	ZO-2 Antibody
<b>Synonyms</b>	TJP2; X104; ZO2; Tight junction protein ZO-2; Tight junction protein 2; Zona occludens protein 2; Zonula occludens protein 2

This product is for research use only, not for use in human, therapeutic or diagnostic procedure.

### Background

TJP2 (tight junction protein 2) encodes a zonula occludens that is a member of the membrane-associated guanylate kinase homolog family. The encoded protein functions as a component of the tight junction barrier in epithelial and endothelial cells and is necessary for proper assembly of tight junctions. Mutations in TJP2 have been identified in patients with hypercholanemia, and genomic duplication of a 270 kb region including this gene causes autosomal dominant deafness-51. Alternatively spliced transcripts encoding multiple isoforms have been observed for TJP2.

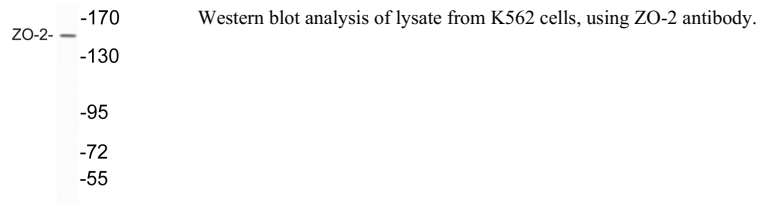
### Recommended Dilution

WB: 1: 500 - 1: 2000

ELISA: 1: 10000

Not yet tested in other applications.

### Images



### Storage

-20°C for one year