

## ZSCAN16 Polyclonal Antibody

### Description

<b>Product type</b>	Primary Antibody
<b>Code</b>	BT-AP09764
<b>Host</b>	Rabbit
<b>Isotype</b>	IgG
<b>Size</b>	20ul, 50ul, 100ul
<b>Immunogen</b>	The antiserum was produced against synthesized peptide derived from human ZNF435. AA range:191-240
<b>Mol wt</b>	40792
<b>Species reactivity</b>	Human, Mouse
<b>Clonality</b>	Polyclonal
<b>Recommended application</b>	WB, IHC-p, IF, ELISA
<b>Concentration</b>	1 mg/ml
<b>Full name</b>	ZSCAN16 Antibody
<b>Synonyms</b>	ZSCAN16; ZNF392; ZNF435; Zinc finger and SCAN domain-containing protein 16; Zinc finger protein 392; Zinc finger protein 435

This product is for research use only, not for use in human, therapeutic or diagnostic procedure.

### Background

May be involved in transcriptional regulation.

### Recommended Dilution

WB: 1: 500 - 1: 2000

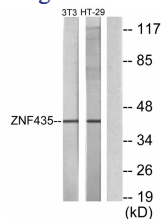
IHC: 1: 100 - 1: 300

IF: 1: 200 - 1: 1000

ELISA: 1: 20000

Not yet tested in other applications.

### Images



Western blot analysis of lysates from NIH/3T3 and HT-29 cells, using ZNF435 Antibody. The lane on the right is blocked with the synthesized peptide.

### Storage

-20°C for one year