

ZSCAN22 Polyclonal Antibody

Description

Product type	Primary Antibody
Code	BT-AP09765
Host	Rabbit
Isotype	IgG
Size	20ul, 50ul, 100ul
Immunogen	The antiserum was produced against synthesized peptide derived from human ZSCAN22. AA range:321-370
Mol wt	54561
Species reactivity	Human
Clonality	Polyclonal
Recommended application	WB, IHC-p, ELISA
Concentration	1 mg/ml
Full name	ZSCAN22 Antibody
Synonyms	ZSCAN22; HKR2; ZNF50; Zinc finger and SCAN domain-containing protein 22; Krueppel-related zinc finger protein 2; Protein HKR2; Zinc finger protein 50

This product is for research use only, not for use in human, therapeutic or diagnostic procedure.

Background

ZSCAN22 (Zinc Finger And SCAN Domain Containing 22) is a Protein Coding gene. GO annotations related to this gene include transcription factor activity, sequence-specific DNA binding. An important paralog of this gene is ZSCAN16.

Recommended Dilution

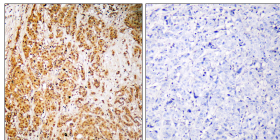
WB: 1: 500 - 1: 2000

IHC: 1: 100 - 1: 300

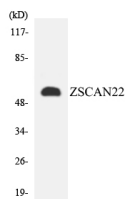
ELISA: 1: 10000

Not yet tested in other applications.

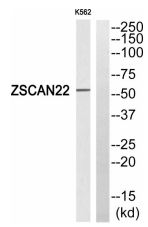
Images



Immunohistochemistry analysis of paraffin-embedded human brain, using ZSCAN22 Antibody. The lane on the right is blocked with the ZSCAN22 peptide.



Western blot analysis of the lysates from HepG2 cells using ZSCAN22 antibody.



Western blot analysis of ZSCAN22 Antibody. The lane on the right is blocked with the ZSCAN22 peptide.

Storage

-20°C for one year

501 Changsheng S Rd, Nanhu Dist, Jiaxing, Zhejiang, China

Tel: 86 21 31007137 | E-mail: save@bt-laboratory.com | www.bt-laboratory.com