

Alpha-protein Kinase 1 Polyclonal Antibody

Description

Product type	Primary Antibody
Code	BT-AP09768
Host	Rabbit
Isotype	IgG
Size	20ul, 50ul, 100ul
Immunogen	The antiserum was produced against synthesized peptide derived from human ALPK1. AA range:11-60
Mol wt	138871
Species reactivity	Human, Mouse
Clonality	Polyclonal
Recommended application	WB, IHC-p, IF, ELISA
Concentration	1 mg/ml
Full name	alpha-protein Kinase 1 Antibody
Synonyms	ALPK1; KIAA1527; LAK; Alpha-protein kinase 1; Chromosome 4 kinase; Lymphocyte alpha-protein kinase

This product is for research use only, not for use in human, therapeutic or diagnostic procedure.

Background

ALPK1 encodes an alpha kinase. Mice which were homozygous for disrupted copies of this gene exhibited coordination defects (PMID: 21208416). Multiple transcript variants encoding different isoforms have been found for this gene.

Recommended Dilution

WB: 1: 500 - 1: 2000

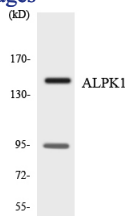
IHC: 1: 100 - 1: 300

IF: 1: 200 - 1: 1000

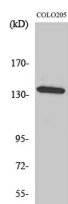
ELISA: 1: 20000

Not yet tested in other applications.

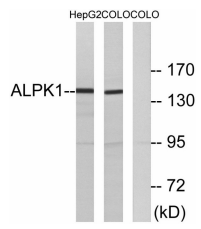
Images



Western blot analysis of the lysates from 293 cells using ALPK1 antibody.



Western Blot analysis of various cells using α -protein Kinase 1 Polyclonal Antibody. Secondary antibody was diluted at 1:20000



Storage

-20°C for one year

501 Changsheng S Rd, Nanhu Dist, Jiaxing, Zhejiang, China

Tel: 86 21 31007137 | E-mail: save@bt-laboratory.com | www.bt-laboratory.com