

## Alpha-Skeletal Muscle Actin Polyclonal Antibody

### Description

Product type	Primary Antibody
Code	BT-AP09769
Host	Rabbit
Isotype	IgG
Size	20ul, 50ul, 100ul
Immunogen	Synthetic Peptide of $\alpha$ -Skeletal Muscle Actin
Mol wt	42051
Species reactivity	Human, Mouse, Rat
Clonality	Polyclonal
Recommended application	WB
Concentration	1 mg/ml
Full name	alpha-Skeletal Muscle Actin Antibody
Synonyms	ACTA1; ACTA; Actin, alpha skeletal muscle; Alpha-actin-1

This product is for research use only, not for use in human, therapeutic or diagnostic procedure.

### Background

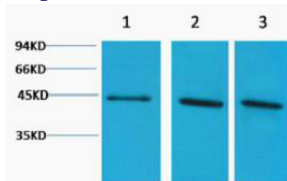
The product (actin, alpha 1, skeletal muscle) encoded by ACTA1 belongs to the actin family of proteins, which are highly conserved proteins that play a role in cell motility, structure and integrity. Alpha, beta and gamma actin isoforms have been identified, with alpha actins being a major constituent of the contractile apparatus, while beta and gamma actins are involved in the regulation of cell motility. This actin is an alpha actin that is found in skeletal muscle. Mutations in ACTA1 cause nemaline myopathy type 3, congenital myopathy with excess of thin myofilaments, congenital myopathy with cores, and congenital myopathy with fiber-type disproportion, diseases that lead to muscle fiber defects.

### Recommended Dilution

WB: 1: 1000 - 2000

Not yet tested in other applications.

### Images



Western blot analysis of 1) Hela, 2) 3T3, 3) Rat Kidney tissue, diluted at 1:2000. Secondary antibody was diluted at 1:20000

### Storage

-20°C for one year