

GSK3 beta(Phospho Ser9) Polyclonal Antibody

Description

Product type	Primary Antibody
Code	BT-AP09770
Host	Rabbit
Isotype	IgG
Size	20ul, 50ul, 100ul
Immunogen	Synthesized phospho-peptide around the phosphorylation site of human GSK3 β (phospho Ser9)
Mol wt	46744
Species reactivity	Human, Mouse, Rat
Clonality	Polyclonal
Recommended application	WB, IHC-p, IF, ELISA
Concentration	1 mg/ml
Full name	Glycogen synthase kinase-3 beta
Synonyms	Glycogen synthase kinase-3 beta; GSK3B; Glycogen synthase kinase-3 beta; GSK-3 beta; Serine/threonine-protein kinase GSK3B

This product is for research use only, not for use in human, therapeutic or diagnostic procedure.

Background

The protein encoded by this gene is a serine-threonine kinase, belonging to the glycogen synthase kinase subfamily. It is involved in energy metabolism, neuronal cell development, and body pattern formation. Polymorphisms in this gene have been implicated in modifying risk of Parkinson disease, and studies in mice show that overexpression of this gene may be relevant to the pathogenesis of Alzheimer disease. Alternatively spliced transcript variants encoding different isoforms have been found for this gene.

Recommended Dilution

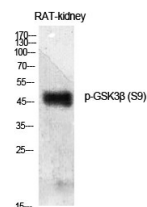
WB: 1: 500 - 1: 2000

IHC-p: 1: 100 - 1: 300

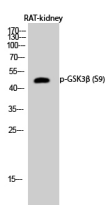
ELISA: 1: 10000

Not yet tested in other applications.

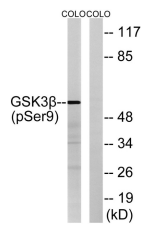
Images



Western Blot analysis of various cells using Phospho-GSK3 β (S9) Polyclonal Antibody diluted at 1:500



Western Blot analysis of RAT-kidney cells using Phospho-GSK3 β (S9) Polyclonal Antibody diluted at 1:500



Western blot analysis of GSK3 β (Phospho-Ser9) Antibody. The lane on the right is blocked with the GSK3 β (Phospho-Ser9) peptide.

Storage

-20°C for 1 year

501 Changsheng S Rd, Nanhu Dist, Jiaxing, Zhejiang, China

Tel: 86 21 31007137 | E-mail: save@bt-laboratory.com | www.bt-laboratory.com