

## Alpha-SMA Polyclonal Antibody

### Description

Product type	Primary Antibody
Code	BT-AP09773
Host	Rabbit
Isotype	IgG
Size	20ul, 50ul, 100ul
Immunogen	Synthesized peptide derived from the C-terminal region of human $\alpha$ -SMA.
Mol wt	42051
Species reactivity	Human, Mouse, Rat
Clonality	Polyclonal
Recommended application	WB, IHC-p, ELISA
Concentration	1 mg/ml
Full name	alpha-SMA Antibody
Synonyms	ACTA1; ACTA; Actin, alpha skeletal muscle; Alpha-actin-1; ACTA2; ACTSA; ACTVS; GIG46; Actin, aortic smooth muscle; Alpha-actin-2; Cell growth-inhibiting gene 46 protein; ACTC1; ACTC; Actin, alpha card

This product is for research use only, not for use in human, therapeutic or diagnostic procedure.

### Background

The product (actin, alpha 1, skeletal muscle) encoded by ACTA1 belongs to the actin family of proteins, which are highly conserved proteins that play a role in cell motility, structure and integrity. Alpha, beta and gamma actin isoforms have been identified, with alpha actins being a major constituent of the contractile apparatus, while beta and gamma actins are involved in the regulation of cell motility. This actin is an alpha actin that is found in skeletal muscle. Mutations in ACTA1 cause nemaline myopathy type 3, congenital myopathy with excess of thin myofilaments, congenital myopathy with cores, and congenital myopathy with fiber-type disproportion, diseases that lead to muscle fiber defects.

### Recommended Dilution

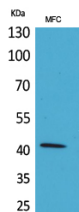
WB: 1: 500 - 1: 2000

IHC-p: 1: 100 - 300

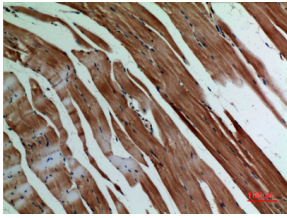
ELISA: 1: 20000

Not yet tested in other applications.

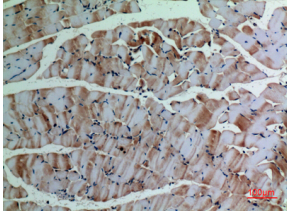
### Images



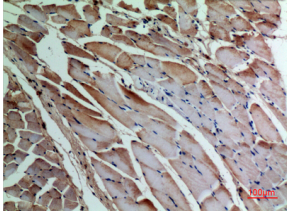
Western Blot analysis of MFC cells using  $\alpha$ -SMA Polyclonal Antibody. Secondary antibody was diluted at 1:20000



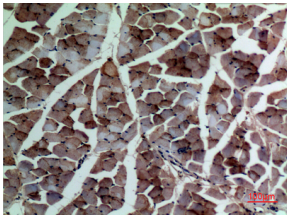
Immunohistochemical analysis of paraffin-embedded mouse-muscle, antibody was diluted at 1:100



Immunohistochemical analysis of paraffin-embedded mouse-muscle, antibody was diluted at 1:100



Immunohistochemical analysis of paraffin-embedded rat-muscle, antibody was diluted at 1:100



Immunohistochemical analysis of paraffin-embedded rat-muscle, antibody was diluted at 1:100

### Storage

-20°C for one year

501 Changsheng S Rd, Nanhui Dist, Jiading, Zhejiang, China

Tel: 86 21 31007137 | E-mail: [save@bt-laboratory.com](mailto:save@bt-laboratory.com) | [www.bt-laboratory.com](http://www.bt-laboratory.com)