

Alpha-Smooth Muscle Actin Polyclonal Antibody

Description

Product type	Primary Antibody
Code	BT-AP09774
Host	Rabbit
Isotype	IgG
Size	20ul, 50ul, 100ul
Immunogen	Synthetic Peptide of α -Smooth Muscle Actin
Mol wt	42009
Species reactivity	Human, Mouse, Rat
Clonality	Polyclonal
Recommended application	WB
Concentration	1 mg/ml
Full name	alpha-Smooth Muscle Actin Antibody
Synonyms	ACTA2; ACTSA; ACTVS; GIG46; Actin, aortic smooth muscle; Alpha-actin-2; Cell growth-inhibiting gene 46 protein

This product is for research use only, not for use in human, therapeutic or diagnostic procedure.

Background

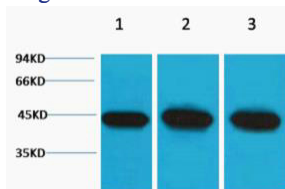
The protein (actin, alpha 2, smooth muscle, aorta) encoded by ACTA2 belongs to the actin family of proteins, which are highly conserved proteins that play a role in cell motility, structure and integrity. Alpha, beta and gamma actin isoforms have been identified, with alpha actins being a major constituent of the contractile apparatus, while beta and gamma actins are involved in the regulation of cell motility. This actin is an alpha actin that is found in skeletal muscle. Defects in ACTA2 cause aortic aneurysm familial thoracic type 6. Multiple alternatively spliced variants, encoding the same protein, have been identified.

Recommended Dilution

WB: 1: 2000 - 5000

Not yet tested in other applications.

Images



Western blot analysis of 1) HeLa, 2) 3T3, 3) Rat Kidney tissue, diluted at 1:5000. Secondary antibody was diluted at 1:20000

Storage

-20°C for one year