

Beta Tubulin Polyclonal Antibody

Description

Product type	Primary Antibody
Code	BT-AP09778
Host	Rabbit
Isotype	IgG
Size	20ul, 50ul, 100ul
Immunogen	Recombinant Protein of Tubulin beta
Mol wt	50433
Species reactivity	Human, Mouse, Rat
Clonality	Polyclonal
Recommended application	WB
Concentration	1 mg/ml
Full name	beta Tubulin Antibody
Synonyms	TUBB3; TUBB4; Tubulin beta-3 chain; Tubulin beta-4 chain; Tubulin beta-III

This product is for research use only, not for use in human, therapeutic or diagnostic procedure.

Background

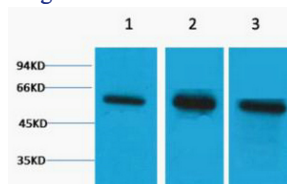
TUBB3 encodes a class III member of the beta tubulin protein family. Beta tubulins are one of two core protein families (alpha and beta tubulins) that heterodimerize and assemble to form microtubules. This protein is primarily expressed in neurons and may be involved in neurogenesis and axon guidance and maintenance. Mutations in TUBB3 are the cause of congenital fibrosis of the extraocular muscles type 3. Alternate splicing results in multiple transcript variants. A pseudogene of this gene is found on chromosome 6.

Recommended Dilution

WB: 1: 2000 - 5000

Not yet tested in other applications.

Images



Western blot analysis of 1) HeLa, 2) Mouse Brain, 3) Rat Brain tissue, diluted at 1:5000. Secondary antibody was diluted at 1:20000

Storage

-20°C for one year

501 Changsheng S Rd, Nanhu Dist, Jiaxing, Zhejiang, China

Tel: 86 21 31007137 | E-mail: save@bt-laboratory.com | www.bt-laboratory.com