

Beta-1,3-Gal-TL Polyclonal Antibody

Description

Product type	Primary Antibody
Code	BT-AP09782
Host	Rabbit
Isotype	IgG
Size	20ul, 50ul, 100ul
Immunogen	The antiserum was produced against synthesized peptide derived from human B3GALTL. AA range:449-498
Mol wt	56564
Species reactivity	Human
Clonality	Polyclonal
Recommended application	WB, IHC-p, ELISA
Concentration	1 mg/ml
Full name	beta-1,3-Gal-TL Antibody
Synonyms	B3GALTL; B3GTL; Beta-1; 3-glycosyltransferase; Beta3Glc-T; Beta-3-glycosyltransferase-like

This product is for research use only, not for use in human, therapeutic or diagnostic procedure.

Background

Beta-1,3-glycosyltransferase encoded by B3GALTL is a beta-1,3-glycosyltransferase that transfers glucose to O-linked fucosylglycans on thrombospondin type-1 repeats (TSRs) of several proteins. The encoded protein is a type II membrane protein. Defects in this gene are a cause of Peters-plus syndrome (PPS).

Recommended Dilution

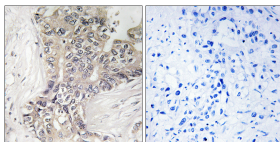
WB: 1: 500 - 1: 2000

IHC: 1: 100 - 1: 300

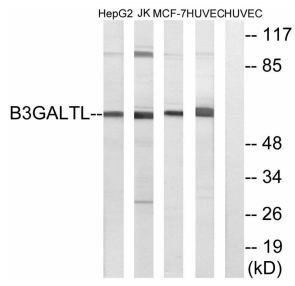
ELISA: 1: 40000

Not yet tested in other applications.

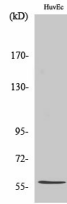
Images



Immunohistochemistry analysis of paraffin-embedded human liver carcinoma tissue, using B3GALTL Antibody. The picture on the right is blocked with the synthesized peptide.



Western blot analysis of lysates from HUVEC, MCF-7, Jurkat, and HepG2 cells, using B3GALTL Antibody. The lane on the right is blocked with the synthesized peptide.



Western Blot analysis of various cells using β -1,3-Gal-TL Polyclonal Antibody diluted at 1:500. Secondary antibody was diluted at 1:20000

Storage

-20°C for one year

501 Changsheng S Rd, Nanhui Dist, Jiading, Zhejiang, China

Tel: 86 21 31007137 | E-mail: save@bt-laboratory.com | www.bt-laboratory.com