

Beta-1,4-Gal-T3 Polyclonal Antibody

Description

Product type	Primary Antibody
Code	BT-AP09786
Host	Rabbit
Isotype	IgG
Size	20ul, 50ul, 100ul
Immunogen	The antiserum was produced against synthesized peptide derived from human B4GALT3. AA range:271-320
Mol wt	43928
Species reactivity	Human, Mouse, Rat
Clonality	Polyclonal
Recommended application	WB, IHC-p, ELISA
Concentration	1 mg/ml
Full name	beta-1,4-Gal-T3 Antibody
Synonyms	B4GALT3; Beta-1; 4-galactosyltransferase 3; Beta-1,4-GalTase 3; Beta4Gal-T3; b4Gal-T3; UDP-Gal:beta-GlcNAc beta-1,4-galactosyltransferase 3; UDP-galactose:beta-N-acetylglucosamine beta-1,4-galactosylt

This product is for research use only, not for use in human, therapeutic or diagnostic procedure.

Background

B4GALT3 (beta-1,4-galactosyltransferase 3) is one of seven beta-1,4-galactosyltransferase (beta4GalT) genes. They encode type II membrane-bound glycoproteins that appear to have exclusive specificity for the donor substrate UDP-galactose; all transfer galactose in a beta1,4 linkage to similar acceptor sugars: glcNAc, Glc and Xyl. Each beta4GalT has a distinct function in the biosynthesis of different glycoconjugates and saccharide structures. As type II membrane proteins, they have an N-terminal hydrophobic signal sequence that directs the protein to the Golgi apparatus and which then remains uncleaved to function as a transmembrane anchor. By sequence similarity, the beta4GalTs form four groups: beta4GalT1 and beta4GalT2, beta4GalT3 and beta4GalT4, beta4GalT5 and beta4GalT6, and beta4GalT7. B4GALT3 (beta-1,4-galactosyltransferase 3) encodes an enzyme that may be mainly involved in the synthesis of the first N-acetylglucosamine unit of poly-N-acetylglucosamine chains. Multiple alternatively spliced transcript variants encoding the same protein have been found for B4GALT3.

Recommended Dilution

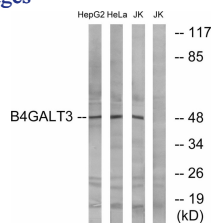
WB: 1: 500 - 1: 2000

IHC: 1: 100 - 1: 300

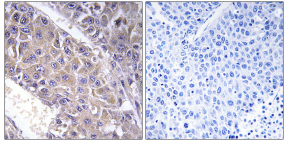
ELISA: 1: 40000

Not yet tested in other applications.

Images



Western blot analysis of lysates from Jurkat, HeLa, and HepG2 cells, using B4GALT3 Antibody. The lane on the right is blocked with the synthesized peptide.



Immunohistochemistry analysis of paraffin-embedded human liver carcinoma tissue, using B4GALT3 Antibody. The picture on the right is blocked with the synthesized peptide.

Storage

-20°C for one year

501 Changsheng S Rd, Nanhu Dist, Jiaxing, Zhejiang, China

Tel: 86 21 31007137 | E-mail: save@bt-laboratory.com | www.bt-laboratory.com