

EXOC6 Rabbit Polyclonal Antibody

Description

Product type	Primary Antibody
Code	BT-AP09831
Host	Rabbit
Isotype	IgG
Size	20ul, 50ul, 100ul
Immunogen	Synthesized peptide derived from human EXOC6
Mol wt	88440
Species reactivity	Human, Mouse, Rat
Clonality	Polyclonal
Recommended application	WB
Concentration	1 mg/ml
Full name	EXOC6
Synonyms	EXOC6

This product is for research use only, not for use in human, therapeutic or diagnostic procedure.

Background

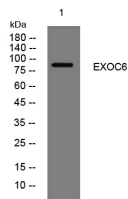
The protein encoded by this gene is highly similar to the *Saccharomyces cerevisiae* SEC15 gene product| which is essential for vesicular traffic from the Golgi apparatus to the cell surface in yeast. It is one of the components of a multiprotein complex required for exocytosis. The 5' portion of this gene and two neighboring cytochrome p450 genes are included in a deletion that results in an autosomal-dominant form of nonsyndromic optic nerve aplasia (ONA). Alternative splicing and the use of alternative promoters results in multiple transcript variants. A paralogous gene encoding a similar protein is present on chromosome 2.

Recommended Dilution

WB: 1: 500 - 1: 2000

Not yet tested in other applications.

Images



Western blot analysis of lysates from Jarkat cells, primary antibody was diluted at 1:1000, 4°C overnight

Storage

-20°C for 1 year