

HECAM Polyclonal Antibody

Description

Product type	Primary Antibody
Code	BT-AP09857
Host	Rabbit
Isotype	IgG
Size	20ul, 50ul, 100ul
Immunogen	Synthesized peptide derived from human protein . at AA range: 10-90
Mol wt	N/A
Species reactivity	Human, Mouse
Clonality	Polyclonal
Recommended application	WB, ELISA
Concentration	1 mg/ml
Full name	Hepatocyte cell adhesion molecule
Synonyms	Hepatocyte cell adhesion molecule ;Protein hepaCAM

This product is for research use only, not for use in human, therapeutic or diagnostic procedure.

Background

The protein encoded by this gene is a single-pass type I membrane protein that localizes to the cytoplasmic side of the cell membrane. The encoded protein acts as a homodimer and is involved in cell motility and cell-matrix interactions. The expression of this gene is downregulated or undetectable in many cancer cell lines, so this may be a tumor suppressor gene.

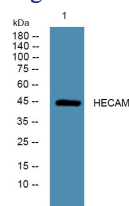
Recommended Dilution

WB: 1: 500 - 1: 2000

ELISA: 1: 5000 - 1: 20000

Not yet tested in other applications.

Images



Western blot analysis of lysates from HCT116 cells, primary antibody was diluted at 1:1000, 4°C overnight

Storage

-20°C for 1 year