

HEN2 Polyclonal Antibody

Description

Product type	Primary Antibody
Code	BT-AP09864
Host	Rabbit
Isotype	IgG
Size	20ul, 50ul, 100ul
Immunogen	Synthesized peptide derived from human protein . at AA range: 30-110
Mol wt	N/A
Species reactivity	Human, Mouse
Clonality	Polyclonal
Recommended application	WB, ELISA
Concentration	1 mg/ml
Full name	Helix-loop-helix protein 2
Synonyms	Helix-loop-helix protein 2 ;HEN-2;Class A basic helix-loop-helix protein 34;bHLHa34;Nescient helix loop helix 2;NSCL-2

This product is for research use only, not for use in human, therapeutic or diagnostic procedure.

Background

May serve as DNA-binding protein and may be involved in the control of cell-type determination, possibly within the developing nervous system.,Contains 1 basic helix-loop-helix (bHLH) domain.,subunit:Efficient DNA binding requires dimerization with another bHLH protein.,

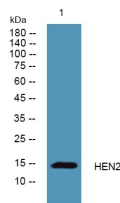
Recommended Dilution

WB: 1: 500 - 1: 2000

ELISA: 1: 5000 - 1: 20000

Not yet tested in other applications.

Images



Western blot analysis of lysates from K562 cells, primary antibody was diluted at 1:1000, 4°C overnight

Storage

-20°C for 1 year