

HES2 Polyclonal Antibody

Description

Product type	Primary Antibody
Code	BT-AP09870
Host	Rabbit
Isotype	IgG
Size	20ul, 50ul, 100ul
Immunogen	Synthesized peptide derived from human protein . at AA range: 40-120
Mol wt	N/A
Species reactivity	Human, Rat, Mouse
Clonality	Polyclonal
Recommended application	WB, ELISA
Concentration	1 mg/ml
Full name	Transcription factor HES-2
Synonyms	Transcription factor HES-2 ;Class B basic helix-loop-helix protein 40;bHLHb40;Hairy and enhancer of split 2

This product is for research use only, not for use in human, therapeutic or diagnostic procedure.

Background

Has a particular type of basic domain (presence of a helix-interrupting proline) that binds to the N-box (CACNAG), rather than the canonical E-box (CANNTG).,The C-terminal WRPW motif is a transcriptional repression domain necessary for the interaction with Groucho/TLE family members, transcriptional corepressors recruited to specific target DNA by Hairy-related proteins.,Transcriptional repressor of genes that require a bHLH protein for their transcription.,Contains 1 basic helix-loop-helix (bHLH) domain.,Contains 1 Orange domain.,subunit:Transcription repression requires formation of a complex with a corepressor protein of the Groucho/TLE family.,tissue specificity:Expressed in placenta, pancreatic cancer, colon cancer with RER, cervical cancer, and in head and neck tumors.,

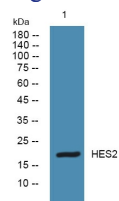
Recommended Dilution

WB: 1: 500 - 1: 2000

ELISA: 1: 5000 - 1: 20000

Not yet tested in other applications.

Images



Western blot analysis of lysates from HCT116 cells, primary antibody was diluted at 1:1000, 4°C overnight

Storage

-20°C for 1 year