

## HIF-1 beta Polyclonal Antibody

### Description

<b>Product type</b>	Primary Antibody
<b>Code</b>	BT-AP09891
<b>Host</b>	Rabbit
<b>Isotype</b>	IgG
<b>Size</b>	20ul, 50ul, 100ul
<b>Immunogen</b>	Recombinant Protein of HIF-1 $\beta$
<b>Mol wt</b>	N/A
<b>Species reactivity</b>	Human, Mouse, Rat
<b>Clonality</b>	Polyclonal
<b>Recommended application</b>	WB, IHC-p, IF
<b>Concentration</b>	N/A
<b>Full name</b>	Aryl hydrocarbon receptor nuclear translocator
<b>Synonyms</b>	Aryl hydrocarbon receptor nuclear translocator; ARNT; BHLHE2; Aryl hydrocarbon receptor nuclear translocator; ARNT protein; Class E basic helix-loop-helix protein 2; bHLHe2; Dioxin receptor, nuclear translocator; Hypoxia-inducible factor 1-beta; HIF-1-beta; HIF1-beta

This product is for research use only, not for use in human, therapeutic or diagnostic procedure.

### Background

This gene encodes a protein containing a basic helix-loop-helix domain and two characteristic PAS domains along with a PAC domain. The encoded protein binds to ligand-bound aryl hydrocarbon receptor and aids in the movement of this complex to the nucleus, where it promotes the expression of genes involved in xenobiotic metabolism. This protein is also a co-factor for transcriptional regulation by hypoxia-inducible factor 1. Chromosomal translocation of this locus with the ETV6 (ets variant 6) gene on chromosome 12 have been described in leukemias. Alternative splicing results in multiple transcript variants.

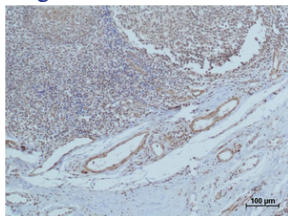
### Recommended Dilution

WB: 1: 1000 - 1: 2000

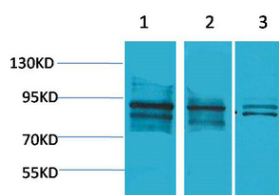
IHC: 1: 200 - 500

Not yet tested in other applications.

### Images



Immunohistochemical analysis of paraffin-embedded human Tonsil using HIF-1 $\beta$  Polyclonal Antibody.



Western blot analysis of 1) MCF7, 2) 3T3, 3) Rat Brain using HIF-1 $\beta$  Polyclonal Antibody.

Secondary antibody was diluted at 1:20000

## Storage

-20°C for 1 year

501 Changsheng S Rd, Nanhu Dist, Jiaxing, Zhejiang, China

Tel: 86 21 31007137 | E-mail: [save@bt-laboratory.com](mailto:save@bt-laboratory.com) | [www.bt-laboratory.com](http://www.bt-laboratory.com)