

FA11 Rabbit Polyclonal Antibody

Description

Product type	Primary Antibody
Code	BT-AP09942
Host	Rabbit
Isotype	IgG
Size	20ul, 50ul, 100ul
Immunogen	Synthesized peptide derived from human FA11
Mol wt	68750
Species reactivity	Human, Mouse
Clonality	Polyclonal
Recommended application	WB
Concentration	1 mg/ml
Full name	FA11
Synonyms	FA11

This product is for research use only, not for use in human, therapeutic or diagnostic procedure.

Background

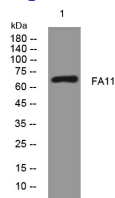
This gene encodes coagulation factor XI of the blood coagulation cascade. This protein is present in plasma as a zymogen which is a unique plasma coagulation enzyme because it exists as a homodimer consisting of two identical polypeptide chains linked by disulfide bonds. During activation of the plasma factor XI an internal peptide bond is cleaved by factor XIIa (or XII) in each of the two chains resulting in activated factor XIa a serine protease composed of two heavy and two light chains held together by disulfide bonds. This activated plasma factor XI triggers the middle phase of the intrinsic pathway of blood coagulation by activating factor IX. Defects in this factor lead to Rosenthal syndrome a blood coagulation abnormality.

Recommended Dilution

WB: 1: 500 - 1: 2000

Not yet tested in other applications.

Images



Western blot analysis of lysates from AD293 cells, primary antibody was diluted at 1:1000, 4°C overnight

Storage

-20°C for 1 year