

Histone H2B Polyclonal Antibody

Description

Product type	Primary Antibody
Code	BT-AP09964
Host	Rabbit
Isotype	IgG
Size	20ul, 50ul, 100ul
Immunogen	The antiserum was produced against synthesized peptide derived from human Histone H2B. AA range:11-60
Mol wt	13944
Species reactivity	Human, Mouse
Clonality	Polyclonal
Recommended application	WB, IHC-p, IF, ELISA
Concentration	1 mg/ml
Full name	Histone H2B type F-S
Synonyms	Histone H2B type F-S; H2BFS; Histone H2B type F-S; Histone H2B.s; H2B/s

This product is for research use only, not for use in human, therapeutic or diagnostic procedure.

Background

H2BFS (H2B Histone Family Member S (Pseudogene)) is a Pseudogene. Diseases associated with H2BFS include endometrial stromal sarcoma. Among its related pathways are Packaging Of Telomere Ends. GO annotations related to this gene include sequence-specific DNA binding and protein heterodimerization activity. An important paralog of this gene is HIST1H2BH.

Recommended Dilution

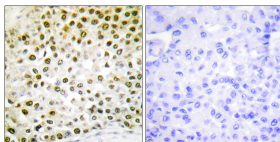
WB: 1: 500 - 1: 2000

IHC-p: 1: 100 - 1: 300

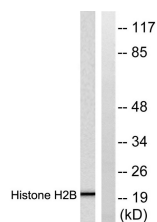
ELISA: 1: 10000

Not yet tested in other applications.

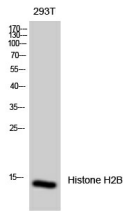
Images



Immunohistochemistry analysis of paraffin-embedded human breast carcinoma tissue, using Histone H2B Antibody. The picture on the right is blocked with the synthesized peptide.



Western Blot analysis of 293T cells using Histone H2B Polyclonal Antibody diluted at 1:500



Western blot analysis of lysates from Raw264.7 cells, treated with TSA 400nM 24h, using Histone H2B Antibody. The lane on the right is blocked with the synthesized peptide.

Storage

-20°C for 1 year

501 Changsheng S Rd, Nanhu Dist, Jiaxing, Zhejiang, China

Tel: 86 21 31007137 | E-mail: save@bt-laboratory.com | www.bt-laboratory.com