

FAM5C Rabbit Polyclonal Antibody

Description

Product type	Primary Antibody
Code	BT-AP09985
Host	Rabbit
Isotype	IgG
Size	20ul, 50ul, 100ul
Immunogen	Synthesized peptide derived from human FAM5C
Mol wt	N/A
Species reactivity	Human, Mouse, Rat
Clonality	Polyclonal
Recommended application	WB
Concentration	1 mg/ml
Full name	FAM5C
Synonyms	FAM5C; Protein FAM5C; DBCCR1-like protein 1)

This product is for research use only, not for use in human, therapeutic or diagnostic procedure.

Background

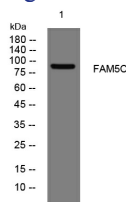
This gene is overexpressed in pituitary tumors but is underexpressed in tongue squamous cell carcinomas| ulcerative colitis| and peri-implantitis. Polymorphisms that increase expression of this gene have been shown to increase vascular inflammation| and an association of this gene with myocardial infarction has been demonstrated. Finally| hypermethylation of this gene may find usefulness as a biomarker for gastric cancer. Two transcript variants encoding different isoforms have been found for this gene.

Recommended Dilution

WB: 1: 500 - 1: 2000

Not yet tested in other applications.

Images



Western blot analysis of lysates from U2OS cells, primary antibody was diluted at 1:1000, 4°C overnight

Storage

-20°C for 1 year