

## FBX10 Rabbit Polyclonal Antibody

### Description

<b>Product type</b>	Primary Antibody
<b>Code</b>	BT-AP09990
<b>Host</b>	Rabbit
<b>Isotype</b>	IgG
<b>Size</b>	20ul, 50ul, 100ul
<b>Immunogen</b>	Synthesized peptide derived from human FBX10
<b>Mol wt</b>	N/A
<b>Species reactivity</b>	Human, Mouse
<b>Clonality</b>	Polyclonal
<b>Recommended application</b>	WB
<b>Concentration</b>	1 mg/ml
<b>Full name</b>	FBX10
<b>Synonyms</b>	FBX10; F-box only protein 10

This product is for research use only, not for use in human, therapeutic or diagnostic procedure.

### Background

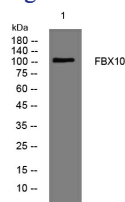
Members of the F-box protein family| such as FBXO10| are characterized by an approximately 40-amino acid F-box motif. SCF complexes| formed by SKP1 (MIM 601434)| cullin (see CUL1; MIM 603134)| and F-box proteins| act as protein-ubiquitin ligases. F-box proteins interact with SKP1 through the F box| and they interact with ubiquitination targets through other protein interaction domains (Jin et al.| 2004

### Recommended Dilution

WB: 1: 500 - 1: 2000

Not yet tested in other applications.

### Images



Western blot analysis of lysates from KB cells, primary antibody was diluted at 1:1000, 4°C overnight

### Storage

-20°C for 1 year

501 Changsheng S Rd, Nanhu Dist, Jiaxing, Zhejiang, China

Tel: 86 21 31007137 | E-mail: [save@bt-laboratory.com](mailto:save@bt-laboratory.com) | [www.bt-laboratory.com](http://www.bt-laboratory.com)