

## FBX18 Rabbit Polyclonal Antibody

### Description

Product type	Primary Antibody
Code	BT-AP09991
Host	Rabbit
Isotype	IgG
Size	20ul, 50ul, 100ul
Immunogen	Synthesized peptide derived from human FBX18
Mol wt	114730
Species reactivity	Human, Mouse
Clonality	Polyclonal
Recommended application	WB
Concentration	1 mg/ml
Full name	FBX18
Synonyms	FBX18

This product is for research use only, not for use in human, therapeutic or diagnostic procedure.

### Background

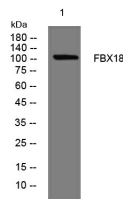
This gene encodes a member of the F-box protein family| members of which are characterized by an approximately 40 amino acid motif| the F-box. The F-box proteins constitute one of the four subunits of ubiquitin protein ligase complex called SCFs (SKP1-cullin-F-box)| which function in phosphorylation-dependent ubiquitination. The F-box proteins are divided into three classes: Fbws containing WD-40 domains| Fbls containing leucine-rich repeats| and Fbxs containing either different protein-protein interaction modules or no recognizable motifs. The protein encoded by this gene belongs to the Fbx class. It contains an F-box motif and seven conserved helicase motifs| and has both DNA-dependent ATPase and DNA unwinding activities. Alternatively spliced transcript variants encoding distinct isoforms have been identified for this gene.

### Recommended Dilution

WB: 1: 500 - 1: 2000

Not yet tested in other applications.

### Images



Western blot analysis of lysates from HuvEc cells, primary antibody was diluted at 1:1000, 4°C overnight

### Storage

-20°C for 1 year