

## FBX41 Rabbit Polyclonal Antibody

### Description

Product type	Primary Antibody
Code	BT-AP09994
Host	Rabbit
Isotype	IgG
Size	20ul, 50ul, 100ul
Immunogen	Synthesized peptide derived from human FBX41
Mol wt	96250
Species reactivity	Human, Mouse
Clonality	Polyclonal
Recommended application	WB
Concentration	1 mg/ml
Full name	FBX41
Synonyms	FBX41

This product is for research use only, not for use in human, therapeutic or diagnostic procedure.

### Background

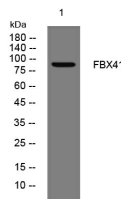
This gene encodes a member of the F-box protein family| which is characterized by an approximately 40 amino acid motif| the F-box. F-box proteins constitute one of the four subunits of the SCF ubiquitin protein ligase complex that plays a role in phosphorylation-dependent ubiquitination. F-box proteins are divided into three classes depending on the interaction substrate domain each contains in addition to the F-box motif: FBXW proteins contain WD-40 domains| FBXL proteins contain leucine-rich repeats| and FBXO proteins contain either different protein-protein interaction modules or no recognizable motifs. The protein encoded by this gene belongs to the FBXO class.

### Recommended Dilution

WB: 1: 500 - 1: 2000

Not yet tested in other applications.

### Images



Western blot analysis of lysates from 293T cells, primary antibody was diluted at 1:1000, 4°C overnight

### Storage

-20°C for 1 year